



Affordable Custom Cabinets Inc.

*three decades strong*

⋮ Why Affordable Custom Cabinets

⋮ Our Process

⋮ Wood Options and Colors

⋮ Picking out Doors

⋮ Construction Method

⋮ Crown Molding and Options



# AC Why Affordable?

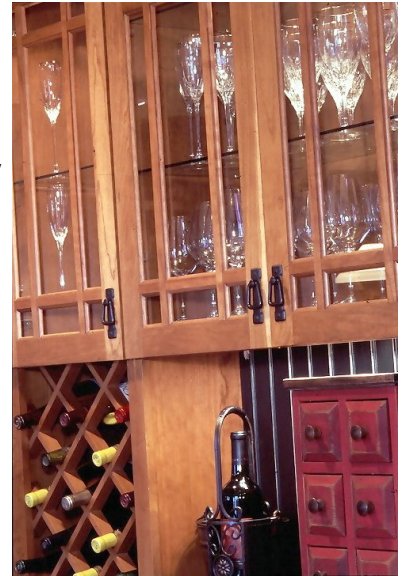
## Always 100% Custom

At Affordable we build your cabinets from scratch to the dimensions of your house or area. We are *not* a semi-custom shop. Semi-custom shops mix and match stock or modular cabinets to "customize" your layout and style. The problem with modular cabinets is that they liberally use fillers to make the cabinets fit into your space! That eats up your usable storage! Instead of fillers, we build cabinets that fit, using all of your space to its fullest potential, and because we are entirely custom the possibilities are endless!

### *The Visible truth*

*If you were to walk into a modular showroom you might think, "Those look great!" But, lets look closer. With modular cabinets, if you open the door you will see a lip on the bottom that will catch whatever you are trying to remove. You will also notice that the face frames overhang finished ends to create another lip, resulting in a gap in the crown molding.*

*With custom cabinets these are things you will never see. We set the bar high for ourselves and we invite you to see the difference in quality for yourself!*



## Lets Clear the Air (common misconceptions)

### *"Aren't Custom Cabinets more expensive?"*

Here are the facts. When an equal comparison is made, custom cabinets are no more expensive and in many cases, actually cost less than big box stores or modular cabinet shops!

### *Speaking of money*

*We like to look not only at the price of something but also at the value. We understand that price is important, but when it comes to picking out cabinets for your home, we want to make sure that you're getting the best value for your dollar.*



### *"Don't Stock/ Modular Cabinets have a superior finish to custom cabinets?"*

No Way! At Affordable we use a Catalyzed Conversion Varnish, which is one of the strongest and most durable finishes around!



## Our service

When you work with us you are working with the best! Our Designers are knowledgeable, friendly, and ready to help you design the cabinets you have always dreamed about. Some of our designers have been in the industry 25+ years, and many of our designers are certified by NKBA for kitchen design. Our amazing design staff will not only help you build your beautiful kitchen, but also make sure it is functional and practical for your everyday needs and uses.



## Buy Local

Buying local has its perks! Because our cabinet shop is located just outside of the Spokane Valley we have many advantages that outsourced companies don't have.

One: **Follow-up.** If there is any follow-up that needs to be done we can get out there quickly to get things taken care of in a timely manner.

Two: **Our installers.** Our installers also work for our company. This means that they know our product inside and out, and if anything needs to be adjusted on site they are ready and equipped to do so!

Three: **No warehouse.** Big box stores and modular companies have huge overhead cost for keeping their inventory in warehouses, those costs are passed to the customer. And then there are shipping costs to get the cabinets from an external warehouse.

Four: **Supporting our local economy.** For 30 years we have been supplying jobs in Spokane and the surrounding area. Today we have roughly 50 employees and work tightly with other local companies to boost and support the economy in the Spokane area.

## The Big Plus!

*Because we are custom, we make sure to maximize the cabinetry to fit your available space.*

*Our designers give you peace of mind by coming out and field measuring your site. They will mark placement of electrical and plumbing to ensure that when it's time for installation of your cabinets, everything is in order.*

*Why Affordable?*



# Our Process

## Getting started

The first thing we recommend doing is getting some rough sketches of the area with dimensions or bring in your blueprints. Once you have these, we encourage you to call our showroom and set up an appointment with one of our designers. Showroom: Mon-Fri 9-5 Sat 10-4 (509) 892-4374 [sales@affordablecustomcabs.com](mailto:sales@affordablecustomcabs.com)



## What happens next?

### Step one: Design and Quote

In this stage of the process you will meet with your designer and start to pick out the "style" of your cabinets. Deciding on wood species, color options, door styles, door and drawer guides, crown molding etc. Feeling overwhelmed? Don't worry! Your designer will help you every step of the way!

From this, your designer will present you with a written proposal based on the options you have chosen for you to review.

### Step two: The Measure

After the quote has been accepted you move into the measuring stage. In this stage, you set up an appointment for your designer to come out to the jobsite and measure the area. If this is new construction, we like to schedule this appointment during the framing/drywall stage, the designer will mark out where plumbing and electrical need to be pulled to fit the design you have chosen.

From here your designer will make any final revisions that you may have and using the exact dimensions of your area make up another quote for your project.



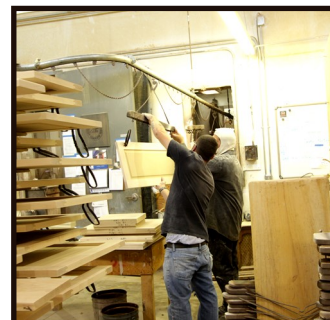
### Step three: The Contract

When all of the details and decisions have been completed, the contract, along with the detailed production drawings can then be drafted and signed. This will clarify many aspects of the project so any "surprises" will be minimized later in the project. Please allow 1-week minimum for this stage.

Complex designs may take more time.

## ∴ On to Manufacturing

Now the count down is on. Once the set has been turned in to the "shop" the ability of making changes is minimal. (If for some reason a change does need to be made, you can make changes during the first week of production.) Full production time is usually within 5-8 weeks, after 2 weeks of production you will receive a phone call to set up an appointment for delivery and install.



*Our Process*

## ∴ Delivery and Installation

On the scheduled date, your cabinetry will be delivered. When they are delivered they are set in the appropriate room for the installation crew. The installation crew will usually be scheduled to come out the following day. If knobs and pulls are to be installed they should be readily available at this time. The doors and drawers will be adjusted before the job is complete, there will be a follow up for cabinets that need to be installed on top of the countertop, ie appliance garage or vanity towers.

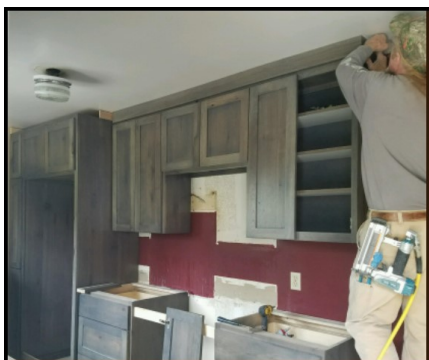
### *How do I prepare for the installation ?*

- Make sure all old cabinets and appliances are removed from the room
- If new flooring is already in place, please provide some type of protection such as cardboard, plastic, tarps or blankets
- Any appliances that need cut outs (sinks, range, ovens, etc.) make sure they are easily assessable for accurate measurements to be taken
- Please have a dry, safe environment such as a garage or carport that the installers will be able to set up saws and other tools in.
- Lastly if you have any indoor pets it is best to keep them in a separate room for their safety, and for the safety of the delivery and installation crew



*\*Please note-*

Affordable Custom Cabinets specializes in cabinetry. We are not trained electricians or plumbers, therefore, you will need to make arrangements to have your sinks, dishwashers, appliances, and lighting installed by a professional. Your contractor or your A.C.C. designer will be glad to recommend reputable electricians and/or plumbers if necessary.



The inks and printing process used to portray colors will vary from actual color.

2015 Affordable Custom Cabinets

All rights reserved

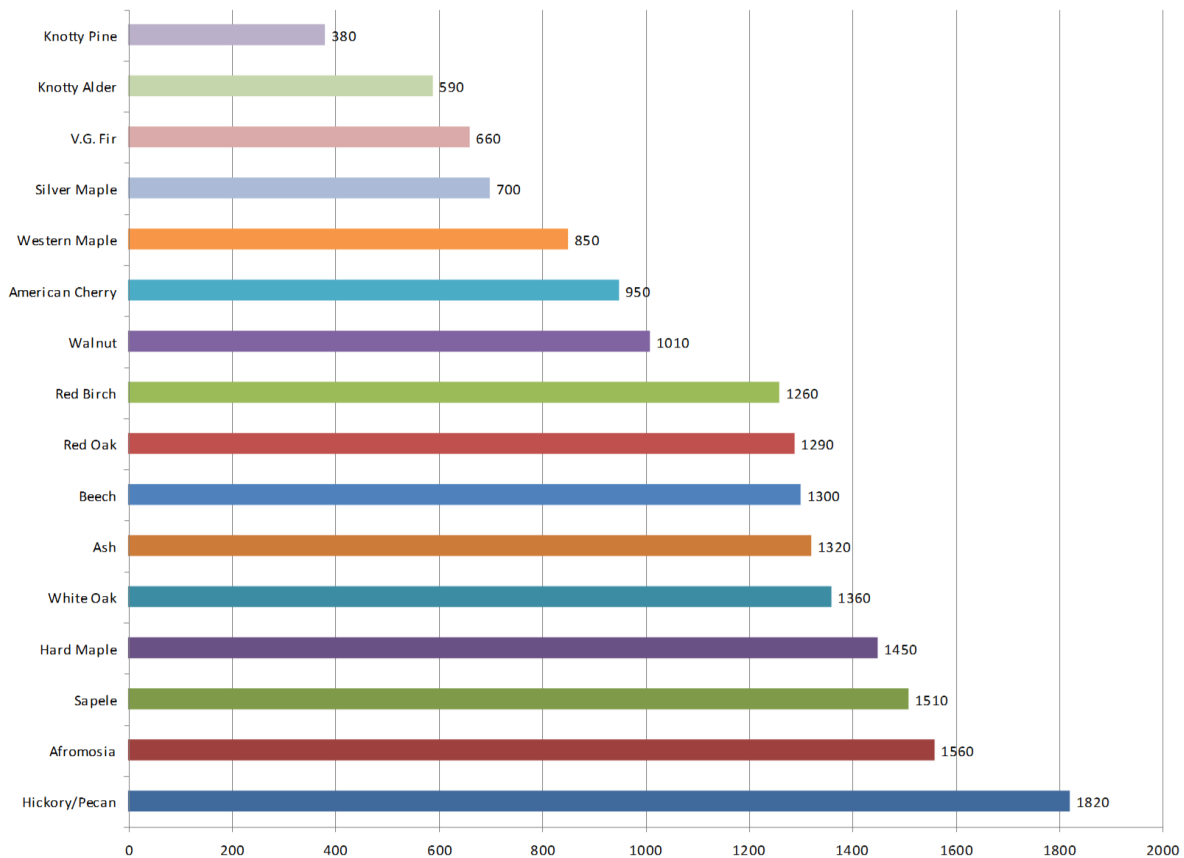




## Hard and Soft Woods

Woods are divided into two classifications, hardwoods and softwoods. In general softwoods come from cone bearing trees like Pine and Fir. Hardwoods originate from trees that have their seeds contained in a seed case like Hickory and Walnut. Below is a chart of all the woods offered by A.C.C. and their hardness rating.

Janka Hardness Rating for woods offered by A.C.C.



(The Janka hardness test involves measuring the force required to embed a .444 steel ball into wood to half its diameter, making a .16 square inch indent. This measurement is listed in pounds-force. )

## Natural Beauty

Because wood comes from a living tree it is made of both heartwood and sapwood. Heartwood is the older, darker, harder central portion of the tree. Sapwood is the softer more permeable part of the tree that is located on the outside layers of the tree. Because of this you will notice that each door will be uniquely different and have slight color variations and grain properties throughout each cabinet.

Specialty woods?

We can do that too!

For specialty woods you can put in a request to check the availability.

### Cherry/Knotty Cherry



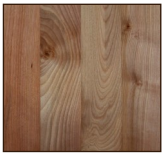
- ◆ Predominate color is a pinkish hue and can range in color from nearly white to brown, sometimes exhibiting a green or yellow hue.
- ◆ Characteristics of Cherry wood are small gum pockets, pin knots, pitch pockets and mineral flecks.
- ◆ Cherry will darken and redden as it ages. Usually, it will continue to change gradually for years.

### Western Maple



- ◆ Predominate colors are a pale pinkish brown to almost white and sometimes has a grayish cast.
- ◆ Characteristic of western maple is a close fine grain.
- ◆ Western maple is a less dense wood and accepts a large range of stain colors.

### Red Birch



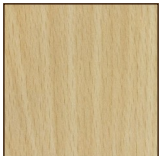
- ◆ Predominate colors range from light blush tone to the pale reddish tan that is unique to red birch.
- ◆ Characteristics of Red Birch are a fine grain pattern with some small pin knots, mineral streaks and often-shiny burl-wood, which gives this wood a ribbon effect.
- ◆ Red Birch is sometimes chosen over Cherry because it will not change in color to the extreme that Cherry will.

### Vertical Grain Fir/Douglas Fir



- ◆ Predominate colors are an even tone pinkish blond to yellow or orange-red.
- ◆ Characteristic of V.G Fir is a very distinctive straight wide grain pattern. This grain pattern will deepen and redden as it ages creating a beautiful almost pin-stripped effect.

### Beech



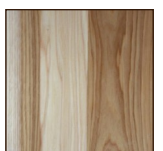
- ◆ Predominate color is a really consistent light pale color.
- ◆ Characteristic of Beech is a fine, tight grain and large medullary rays.
- ◆ Beech is a heavy wood that has a high shock resistance and takes a large variety of stains well.

### Hard Maple



- ◆ Predominate colors are a light off-white tone to a medium yellow tan or even salmon color.
- ◆ Characteristic of Hard Maple is a soft, flowing, close-graining pattern.
- ◆ Maple will also change color as it ages and take on a "golden" hue. If it is stained, you will not notice the goldening as much. However, because Maple is so hard it is difficult to put a dark stain on it.

### Rustic Hickory/ Clear Hickory



- ◆ Predominate colors vary from the heartwood to the sapwood. Heartwood colors range from rusty brown to almost black. Sapwood colors vary from white or creamy and many times tinged with inconspicuous fine brown lines.
- ◆ Characteristics of Hickory is closed grain with moderate definition and somewhat rough texture. Hickory is known for it's unpredictable and dramatic grain patterns.
- ◆ Hickory is the hardest, heaviest, and strongest all American wood. This wood will also change during the aging process and bleaches when exposed to sunlight for extended period of time. If stained, the bleaching process will be minimized.

### Oak



- ◆ Predominate colors vary from shades of white, tan, brown to bluish or greenish.
- ◆ Characteristic of Oak is the pronounced wide "flame" grain pattern.
- ◆ Knotty Oak is another popular choice that has large uneven shaped knots.

### Quarter Sawn Red Oak



- ◆ Predominate colors vary from shades of white, tan, brown to bluish or greenish.
- ◆ Characteristic of Quarter Sawn Oak is having grain lines mostly parallel to the length of the strips with medullary ray flecks present and more than 1/16" wide.
- ◆ Affordable Custom Cabinets also offers Quarter Sawn White Oak if requested.

### Knotty Alder



- ◆ Predominate colors are almost white when freshly cut but quickly changes to light brown with a yellow or reddish tinge once exposed to air.
- ◆ Characteristic of Alder is a fine fairly straight grain with a uniform texture.
- ◆ Alder is a consistent wood as there is no visible boundary between sap and heartwood.

### Walnut



- ◆ Predominate colors for sapwood range from creamy white and light tan, heartwood ranges from rich dark brown to purplish black.
- ◆ Characteristic of Walnut is a straight grain with a sometimes wavy or curly grain.
- ◆ Walnut will "patina" as it ages acquiring a deep copper hue. Without stain, it will bleach out over time.

### Rustic Maple (Silver Maple)



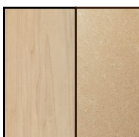
- ◆ Predominate colors are pale pinkish brown to almost white and sometimes has a grayish cast. Where the mineral streaks are will have an olive or greenish black coloration also known as mineral stain.
- ◆ Characteristic of rustic maple is a close, fine grain with the addition of knots and distinctive mineral streaking.
- ◆ Mineral streaks will become more pronounced over time if a clear coat is applied. If a darker stain is applied, it will help mask the greenish tones and make them less visible.

### Knotty Pine



- ◆ Predominate color is a light color variation from cream to a light tan. Knotty Pine will "mellow" turning a creamier yellow with age and the knots will darken.
- ◆ Characteristics of Knotty Pine are an open grain, even texture, and knotty appearance. The knots will vary in size, color, and distribution.

### Paint Grade Maple/MDF



- ◆ Paint grade maple is made out of hard maple so that face frames and door frames resist dents. The panels of the doors are made out of MDF. MDF is a dense hardboard made from fine particles under extreme pressure.
- ◆ Why MDF panels? Wood is naturally hygroscopic which means it absorbs and gives off moisture depending on the humidity of the environment. Because of this, wood expands and contracts; this causes hairlines where the wood is joined together. MDF is a smooth, stable substrate for a beautiful painted finish.





## Finish Options

### Stained Wood Cabinets

At A.C.C. we offer 27 standard stain colors. Because each wood type will take the stain a bit differently, some woods are limited on color options. At the showroom there are samples available for checkout to help determine the perfect color to go with the rest of the materials for your project. All stains are finished with our conversion varnish for a beautiful, durable, long lasting finish.

### Painted Cabinets

Our paint is actually a pigmented conversion varnish, which means that it will be scratch and stain resistant. We offer 19 standard paint color options, including 9 shades of white and cream, 5 shades of grey, black and several accent colors. If you can't find your perfect shade, we are able to customize your colors with the full line of Sherwin Williams paint colors.

### Sheen

Our standard stain finish is a Semi-gloss, we also offer a Dull Rub or Flat option for all of our stain colors.

Our standard paint finish is a Satin, but can also be ordered as a Matte.

### Glaze

Glazing can really change the look of your stained or painted cabinets. We offer full surface glaze, or detail glazing in various degrees. Glazing can really highlight the intricate details that occur in our doors and drawers, and add depth and dimension.



### Distressing

If you like the rustic look, we can achieve that as well! Several of the woods we offer come in both a clear and a knotty version. Additionally, we can add machine or hand distressing, worm holes, edge wear and sand through as single options or a combination. This can add just the right amount of character for the perfect look.



# **A.C.C.** Picking out doors

When you go into a big box store or a modular cabinet shop you pick out your door. This door is a set style and nothing on the door can be changed. Here at A.C.C. you get to pick and choose your door in its entirety. From the *doors style, edge profiles, and inside details*. So many options can be overwhelming, but we have found a simple process to break it down and pick out your perfect custom door for your style and budget.

## Step 1– Picking out Door Style:

There are two general categories for door style: Panel doors and Slab style doors.

### Panel Doors:



Raised Panel



Reverse/Quarter Panel

#### Raised Panel

As you can see to the left, there are two types of panel doors. The first one is the raised panel where the center is raised even with the perimeter frame. This gives the door dimension. The center panel is crafted from solid wood.

#### Reverse Panel

A reverse panel is also made with a solid wood center panel, but it is turned to face the inside of the cabinet leaving the front flat and recessed. This creates the look of a Shaker style or picture frame.

#### Quarter Panel

The quarter panel door looks nearly identical to the reverse panel door from the outside. The biggest difference is that quarter panel uses a 1/4" plywood to make the center panel of the door while the reverse panel is a solid wood center panel. A budget friendly option for a high end look!



Wainscot Panel

#### Wainscot Panel

Having wainscot or "bead-board" in your panel adds a nice detail. We have 2 different styles of wainscoting available: standard and wide tongue in groove.

## Slab Style doors:

### Executive

An Executive door is constructed from 5/4 thick lumber which is "laid-up" or laminated together. Because it requires 5/4 thick lumber it is not available in all wood species. You can also add details to an executive door such as v-grooves or a routed panel detail.

### Euro Flair

A Euro Flair Door is made up of two rails at the top and bottom with vertical planks tongue and grooved together between the two rails.

### Savannah Door

The Savannah door is a actually a 6 piece door that has a very slight raised center panel that gives it the appearance of a slab door. The center panel sits 1/8" proud and has horizontal grooves across the front.

### Banded Door

A Banded door is made out of 3/4" material with a wood veneer, melamine, or laminate applied. The edges will be square for the banding to be applied. This style of door can be specified with grain match vertically or horizontally.



*Picking out doors*

### Did you Know...

Here at A.C.C. we make all of our doors and drawers from scratch. We take huge pride in being a factory that does it all at a superior quality level. Most of the doors we make are considered a five piece door.

### What is a Five piece door?

All of our **panel** doors are five piece construction. That means that the stiles and rails are tongue and grooved together around the center panel. This creates a floating center panel, which allows for expansion and contraction as our climate changes without doing damage to the door.



## Step 2– Deciding on Details:

The details of the door can really alter the overall look of a cabinet set. At A.C.C. our doors are made a la carte! That means you get to mix and match the inside, outside, and panel details to your liking. Getting to design your own door is one of the exciting things you get to do working with a custom cabinet shop. You will work side by side with your designer until you have picked out your perfect door.

*Picking out doors*



2.5" Standard Frame

### Frame size:

The Frame of the door consists of the four rails that go around the center panel. Standard rail is 2.5" and a Wide Frame is 3.5" By changing the width of these rails you can see how that also changes the overall look of the cabinet.



Wide 3.5" Frame

### Three details on Panel doors:

1. *Outside Detail*– We have 12 outside edge details
2. *Inside Details*- We have 5 inside details
3. *Panel Details* (only on raised panel doors) - We have 3 panel details

When you are working with your designer you will have access to many door combinations that we have on display at the showroom.

### Arches:

Arches can add a nice look to an overall set or kitchen. Most customers add them to the top of all upper doors but they can also be on both top and bottom of a door.

We currently have six arches to choose from; Standard, Horizon, Hex, Tall Half, Half Horizon, and Craftsman.



Hex Arch



Horizon Arch

## Variations::

*Picking out doors*



T-Panel Door



Split Panel Door



Double Bevel



Triple Panel



Executive Door with CNC Diamond

Glass doors are used in cabinetry to highlight or dress up an area or kitchen. At A.C.C. we offer various styles of grids and have a variety of glasses to choose from.





# Construction Method

Here at Affordable we specialize in several different methods of construction; overlay, flush and euro. Each method has its own unique look that, when combined with your door style, makes your kitchen stand on its own.

## Overlay Construction



Standard overlay has a 1.25" reveal between the doors and drawers allowing you to see more of the face frame. With standard overlay you can have either exposed or hidden hinges. This would be the construction method to go with if you are not planning on having hardware.

### What is Overlay Construction?

*Overlay construction is when the doors and drawers sit on top of the frame of the cabinet.*

*There are two types of Overlay Construction; Standard overlay and Full overlay.*



### Did you know...

Because we are 100% custom we build all our own drawer boxes and face frames in long runs to the specifications of your project. We are *not* limited to the 3" increments that modular companies are confined to.

Full overlay is the second type of frame cabinet. This method is used to "fully" cover the face frame of the cabinet, giving it the appearance of a frameless construction method. The reveal between the doors and drawers is only .25". Because of this tight reveal only hidden hinges can be used in this construction method and having hardware is a must.



## Flush Construction



### What is Flush Construction?

*Flush construction is when the doors and drawers sit inside the frame openings making the doors and drawer fronts flush with the frame. Because the fitting of the doors and drawers is critical to have even spacing to prevent rubbing or hitting, this is an upgraded construction method from the standard overlay.*

*There are two types of Flush Construction; Flush Mount and Hybrid.*

*Construction Method*

A standard flush mount construction will have two inch rails and stiles in-between the doors and drawers. It will also come with a beaded haunch detail that goes around each door and drawer opening. With flush mount, you can choose either exposed or hidden hinges depending on the overall look you are going for.

Other options for flush mount are to have no beaded haunch and leave it a square edge, or to do a raised beaded haunch that raises above the face of the cabinet 1/8".



### Did you know.....?

**Our wooden drawers are constructed with a dovetail joint, creating an almost inseparable joint!**

The Hybrid is a combination of flush mount and frameless. Unlike the standard flush mount construction the hybrid does not have the two inch rails and stiles between the doors and drawers and does not have a bottom rail. The hybrid will also always have the hidden European hinge, which is fully adjustable and has a soft close feature.

Because of its unique look, it is considered more contemporary and will not have the beaded haunch that a standard flush mount cabinet will have, but will be square edged.

## Frameless or Euro Construction

Frameless or "European" Construction can be made with melamine, laminate or wood. With this method of construction there is no frame so the cabinet doors and drawers are affixed directly to the box of the cabinet. When the cabinets are all assembled together it shows a flush, continuous run of doors and drawers giving it a neat clean look. With this construction method you will always have a high grade European hidden hinge.

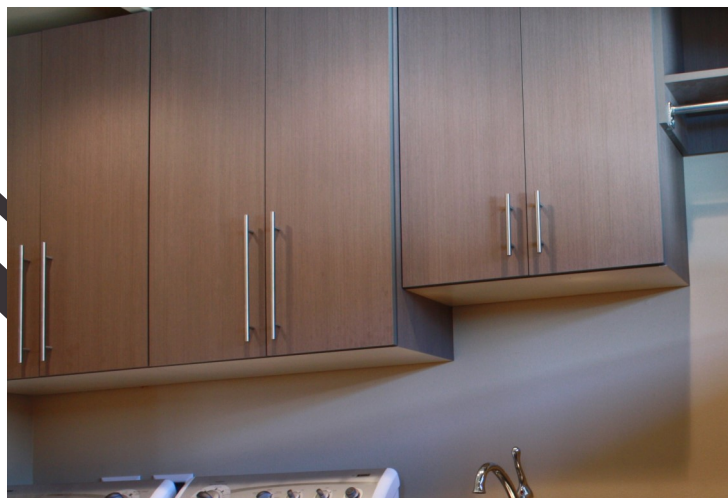


### Wood Frameless Cabinets

With Wood frameless cabinet you can have any 4/4 thick door made by A.C.C. as long as you have the square back edge. Wood frameless cabinets will always have a wood applied end that's the same depth as the cabinets with the door (approximately 1" deeper than the cabinet box). This gives you more of a flush mount look.

### Laminate or Melamine frameless cabinets

A.C.C. offers 4 standard colors of melamine frameless; white, almond, grey, and black. If a custom laminate is desired, then the possibilities are endless! With a laminate or melamine frameless set you will always have a banded slab door style, it will traditionally not come with any applied ends, however you can have them added if you prefer that look!





# Crown Molding Options

## Crown Molding

We offer 16 standard crown moldings. When choosing crown molding, your selected door style will play an important role as well as the overall style you are trying to achieve.



Crown #1 Small Traditional Crown

- Height 2 1/4" Projection 1 1/4" beyond face frame Diagonal 2 1/2"



Crown #2 Top Mount Crown

- Height 1" Projection 1 1/4" beyond face frame Diagonal 1 5/8"



Crown #3 Bullnose Top Mount Crown

- Height 1" Projection 1 1/4" beyond face frame Diagonal 1 5/8"



Crown #4 Square Top Mount Crown

- Height 3/4" Projection 1 1/4" beyond face frame Diagonal 1 1/2"



Crown #5 Triple Shaker Step

- Height 3" Projection 1 5/8" beyond face frame Diagonal 3 3/8"



## Crown Molding Continued



Crown #6 A.C.C. Standard Crown

- Height  $2 \frac{1}{8}$ " Projection  $2 \frac{1}{8}$ " beyond face frame Diagonal  $3 \frac{1}{4}$ "



Crown #7 Craftsman Crown

- Height  $3 \frac{7}{8}$ " Projection  $2 \frac{3}{8}$ " beyond face frame Diagonal  $4 \frac{1}{2}$ "



Crown #8 Tall Furniture Crown

- Height  $3 \frac{1}{4}$ " Projection  $2 \frac{3}{4}$ " beyond face frame Diagonal  $4 \frac{1}{4}$ "



Crown #9 Small Cove Crown

- Height  $1 \frac{3}{4}$ " Projection  $1 \frac{3}{4}$ " beyond face frame Diagonal  $2 \frac{1}{2}$ "



Crown #10 Waterfall Top Mount Crown

- Height 1" Projection  $1 \frac{1}{4}$ " beyond face frame Diagonal  $1 \frac{5}{8}$ "



Crown #13 A.C.C. Bungalow Crown

- Height 3" Projection  $2 \frac{3}{8}$ " beyond face frame Diagonal  $3 \frac{7}{8}$ "



Crown #28 The French Country Crown

- Height 3 3/8" Projection 2 7/8" beyond face frame Diagonal 4 1/2"



Crown #30 Tall Cove and Bead Crown

- Height 3 1/16" Projection 3 1/16" beyond face frame Diagonal 4 3/8"



Crown #39 Small Country Crown

- Height 2 3/4" Projection 2 3/8" beyond face frame Diagonal 3 5/8"



Crown #40 Small Angle Crown

- Height 2 3/4" Projection 1 5/8" beyond face frame Diagonal 3 1/8"



Crown 1X4 (Can be made anywhere between 1X1" to 1X6" high)

- Height varies Projection 1 " beyond face frame Diagonal same as height

Did you Know?

All of our standard crowns are made from scratch at our shop. You can modify or stack different crowns to create a taller or different style crown.



## *Affordable Custom Cabinets Inc.*

Showroom: 12115 E. Mission Ave Spokane Valley, WA 99206

Showroom (509) 892-4374 In Spokane (509) 928-2645

Toll Free (888) 928-2645 Fax (509) 927-4118

Tri-Cities Showroom:

400 N. Arthur Street, Kennewick, WA

[www.affordablecustomcabs.com](http://www.affordablecustomcabs.com)

